

Reclaiming the Streets through “Tactical Urbanism”

APA California-Central Section Happy Hour | April 8, 2021

Ryan Johnson, Planning Associate

Alta Planning + Design

ryanjohnson@altago.com



alta

The Current “Normal”



The Immediate Response: Slow Streets!



Next Step: Keep Restaurants Alive!



Can We Make These Changes Permanent?

New State Bill Would Make CA's Outdoor Dining Rules Easier — and Permanent

Senate Bill 314 is an ambitious push to cut red tape while expanding LA's al fresco options

by [Mona Holmes](#) | Feb 9, 2021, 12:29pm PST

f t SHARE



Jay L. Clendenin / Los Angeles Times via Getty Images



E
Eater LA

Sign up for our newsletter.

Email (required)

By signing up, you agree to our [Privacy Notice](#) and European users agree to the data transfer policy.

Outdoor dining may become permanent option in Los Angeles

By ABC7.com staff

Tuesday, October 20, 2020

Go Human SoCal



Technical Assistance



Ad Campaign



Demonstration Events





Foothill Blvd

RIGHT LANE
MUST
TURN RIGHT

Kona Kona
DELI & FAMILY RESTAURANT

GLENDORA VILLAGE
Holiday Shop

Kit-of-Parts

PARKLET

Set up

First, mark off a 22 feet space where the parklet is to be located. Once a designated space has been chosen, begin by placing pedestals down in a grid that will support the planes.

Ensure the pedestals are set to a level that allows for a flat surface from plane to curb to sidewalk. Continue setting down pedestals and connecting planes on top of the pedestals.

Once the planes are set up, connect the small and large railing brackets down to the plane, using caps and screws. The caps should be placed under the planes, to connect the brackets and planes.

Finally, assemble the tables and place the tables, umbrellas, stools, and take plants on the parklet.

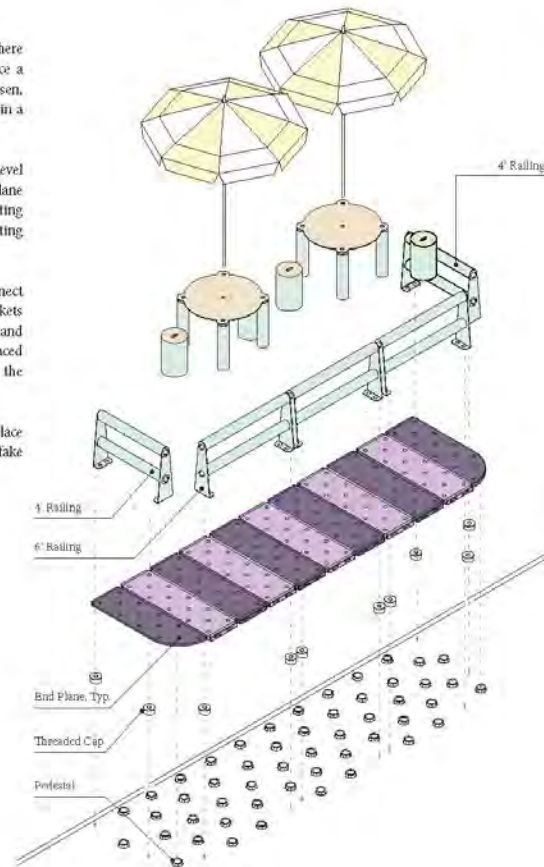
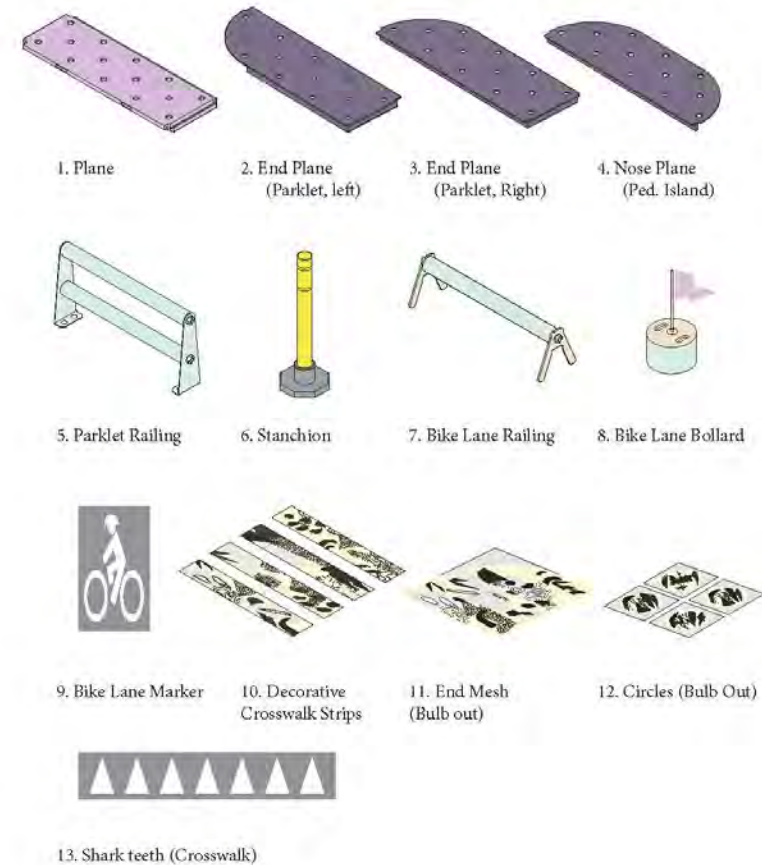


Fig. 07: Parklet Assembly Diagram

GLOSSARY OF TERMS

Parts









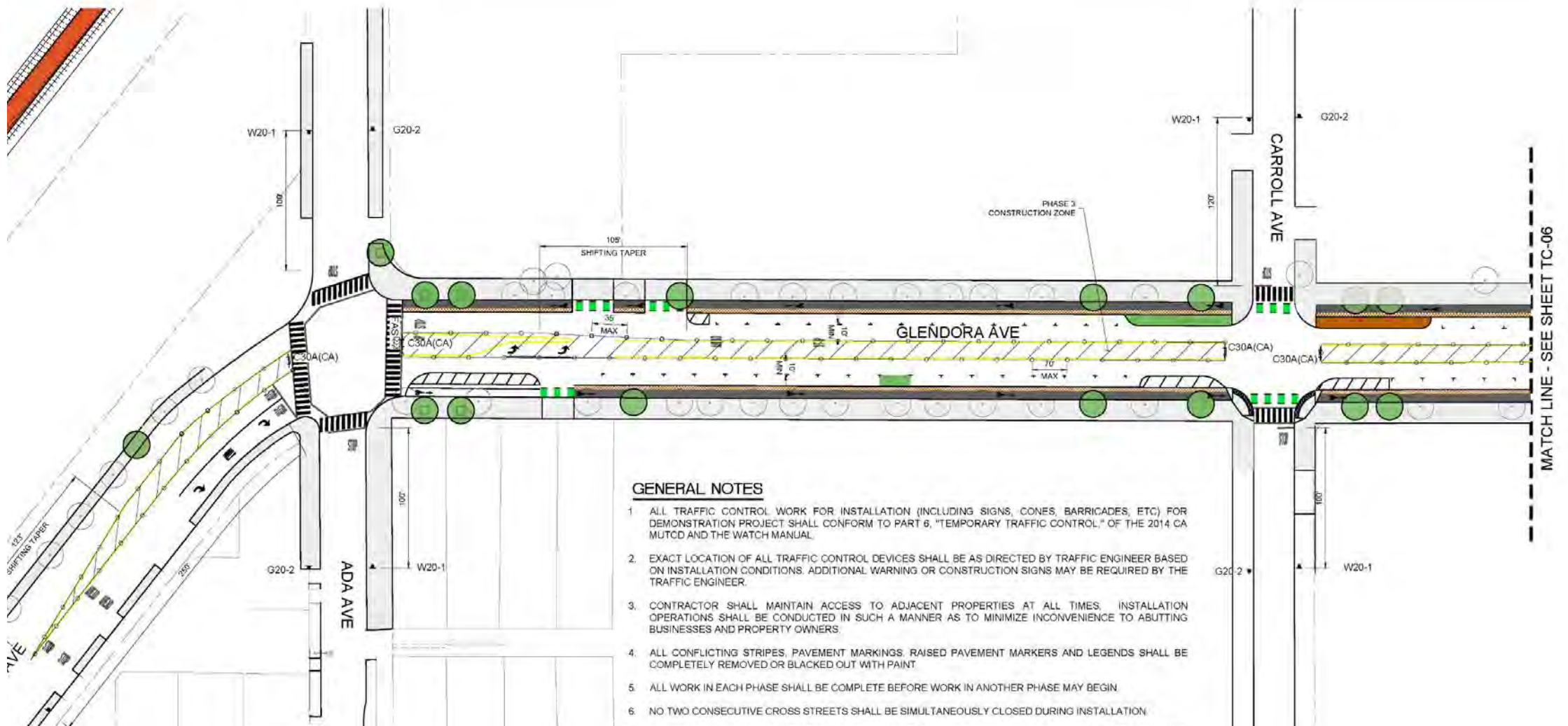




Photo Credit:
ActiveSGV



Photo Credit:
ActiveSGV









